



JBF Allentown Winter Sale

Acceptable Items List



Kids clothing premie through size 18



Adult mens & womens clothing, maternity, juniors sizes

ALL long sleeves & 3/4 sleeves; will accept the following short sleeves ONLY: onesies, heavy winter dresses, athletic tshirts size 6+, winter holidays & sports (Christmas, 76ers, etc)



ALL other short sleeves & tanks (save for spring)

ALL long pants and capris; athletic shorts size 6+; will accept skirts ONLY in heavy fabrics like curdoroy or winter patterns like snowflakes



ALL other shorts & skirts (save for spring)

All seasons of pajamas accepted



All shoes for kids size infant 1 through big kids 8+; sneakers, dress shoes, boots, crocs, sports shoes



Sandals, water shoes, flip flops (save for spring)

Outerwear & sports, & dress-up: Winter jackets & accessories (hats, gloves), All season accessories (bows, caps), dancewear & sportswear, swimsuits



Lightweight spring jackets, used underwear, swim shoes & summer accessories, Halloween costumes

Accepted

Not Accepted



Item Limits



LIMIT 450 total items (tags)



NO LONGER ACCEPTING juniors/teen clothing above kids size 16/18, maternity clothing, DVDs



LIMIT 20 Chapter Books
LIMIT 25 Accessories



NO LONGER ACCEPTING Single Onesies
Onesies must be part of an **outfit or bundle**
i.e. - 2-3 onesies together in a bundle or
bundled as an outfit with pants similar to how they
are purchased in the stores



WHEN RESELLING “BRAND NEW WITH TAG” ITEMS:

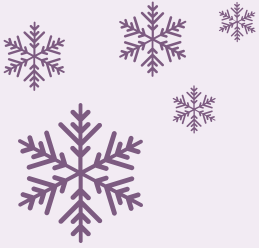
LIMIT of 5 identical items; LIMIT of 20 of the same item despite color/size.

For example, if you are reselling brand new crocs you may bring up to 5 pink size 2 crocs and up to 20 brand new crocs across all sizes/colors.

Bringing more than the item limits, the category limits above, or 450 total items will result in a 10% processing fee applied



New Limits



Specific to the winter sale!



LIMIT 450 total items (tags)

(If you are bringing over 300 tags you are considered a power seller)



If you are bringing over 300 items, you must bring **150 newly tagged items (fresh inventory)** OR **150 retagged items where you lowered the price**



NOT ACCEPTING:

backpacks

bedding (ALL sheets, blankets, pillows)

party supplies

school supplies

Halloween costumes (except dress-up costumes are acceptable)



Mommy Mart is back! Limit 5 items, see next page for details!



What Else Do We Accept?



INFANT ITEMS: Carriers & diaper bags (hung on hangers), boppy pillows, bumbos, safety items like baby monitors, swaddlers, diapers & diapering accessories



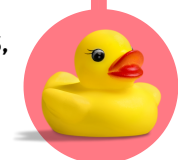
Toys, Electronics, Puzzles, Games, Crafts:
Toys for ALL ages, recent electronics, Puzzles, Games & Crafts for kids; sporting equipment



Room Decor: Children's room and bathroom decor, Mobiles, sound machines, changing pads, seasonal kids decor



Potty/Bath: Clean potty seats & bath toys, kid's towels, kids' bath accessories, baby tubs



MOMMY/DADDY MART: Limit 5 items, Like-new home decor and serveware/bakeware (home decor, wine glasses, serving dishes... think items you would find at HomeGoods), BRAND NEW giftable lotions, skincare, etc like-new tools, BBQ sets



INFANT ITEMS: Inclined sleepers, Boppy pillows without the hole (loungers), Bumbos without a safety strap. Stained or ripped items

Toys, Electronics, Puzzles, Games, Crafts: Dirty items, Items without batteries or non-working, Items missing essential pieces, vintage items, porcelain dolls, handmade toys, happy meal toys

Room Decor: Adult decor, stained items, all bedding (blankets, sheets, etc), out-of-season decor (i.e. bring Easter baskets in spring at Halloween baskets in fall)

Potty/Bath: Dirty/stained items, items with mold

MOMMY/DADDY MART: Limit 5 items. Not accepting bedding linens like pillows & curtains, purses/accessories/ clothing/shoes, workout gear. This category is strictly for decor, serveware, bakeware, lotions/skincare.

Accepted

Not Accepted



What Else Do We Accept?



FEEDING: Kids' plates, cups, utensils, sippy cups, water bottles, bibs, placemats, NEW pacifiers, NEW bottles or used bottles with nipples removed, manual breast pumps, electric breast pump accessories except tubing, bottle accessories like warmers & drying racks

Stuffed Animals: Licensed characters (like Disney) or electronic (talk, sing, etc). Pillow Pets & Squishmallows.

Beds/Sleepers: Cribs, toddler beds & kid-themed twin beds (like car beds). Crib mattresses. Bassinets & co-sleepers with a stand & sides over 7.5 inches high.

Books: Soft books, board books, picture books, up to 20 chapter books (for kids and tweens). Educational & homeschooling.

ALL items brought to the sale must be in full working order.



FEEDING: Used pacifiers, used bottle nipples, electric breast pumps, formula, food, medicine, used breast pump tubing, worn utensils or cups (with scratches or bite marks)

Stuffed Animals: Basic stuffed animals. Beanie Babies/Boos. Stained stuffed animals.

Beds/Sleepers: Bed frames over twin size. Mattresses other than crib size. Drop-side cribs. Crib bumpers. Crib wedges. Inclined sleepers. In-bed co-sleepers like dock-a-tot or snuggle nests.

Books: More than 20 chapter books. Adult books. Parenting books.

Items without batteries. Items that do not work. Items that do not have all pieces necessary for operation. Dirty items.

Accepted

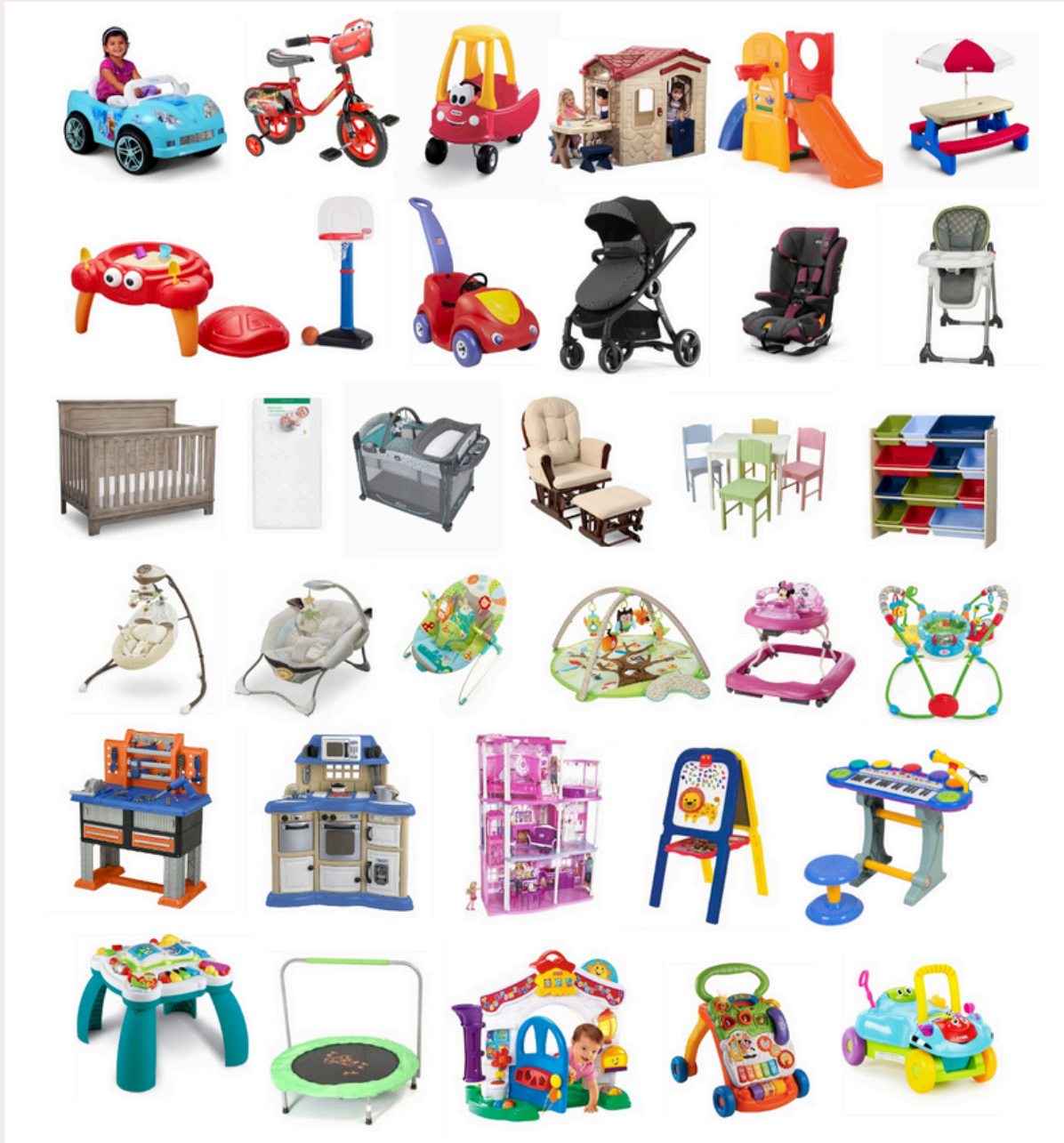
Not Accepted



Large Toys & Baby Equipment



These items are a "YES!" at any of our sales (and we sell 90% of these items)!



Items not accepted: items with dirt, large scratches (peeling stickers, fading and superficial scrapes OK), recalled items (check at CPSC.gov), items without safety straps (if provided by manufacturer). These items require a "Large Item Claim Ticket". See website for details.



Items with Safety Concerns



Due to safety concerns, the following items are not accepted or restricted. These are the **MOST COMMON** safety concerns we see at the sale.



Incline Sleepers no longer accepted.



Cribs greater than 10 years old. Drop side cribs. JBF Crib waiver required for all cribs.



Crib bumpers & rail covers no longer accepted (including mesh).



Car Seats must have 1 full year of use before expiration. Each piece must have a manual. Each piece must have a JBF waiver.



Boppy Loungers (boppy pillows without the hole) have been recalled



Bumbos without the strap cannot be sold



Check **strollers** for recalls by searching "brand, model recall" on Google



Check **pack n' plays** for holes in the netting



Items marketed for sleep for infants up to 5 months of age (bassinets, in-bed sleepers, etc), item must have a stand & sides over 7.5 inches high.

JBF Consignor Car Seat Waiver (Please use One per Car Seat)

Car Seat Brand & Model: _____ Model# or Serial # _____

Date on Car Seat: _____ OR Expiration Date: _____

Thank you for your commitment to safety!

Car Seat Safety Checklist Questions	Circle answer and follow instructions.	
1. Are you the original owner of the seat?	Yes – Continue	No – Destroy Car Seat
2. Does the seat have a label with the date of manufacture and the model name/number?	Yes – Continue	No – Destroy Car Seat
3. Is the car seat expiration date one year or more from now?	Yes – Continue	No – Destroy Car Seat
4. Has the seat been recalled for a safety defect?	Yes – Continue to #4b	No – Continue to #5
4b. Has the defect been remedied?	Yes – Continue to #5	No – Destroy Car Seat or Remedy then Continue
5. Has the seat been involved in any vehicle crash (even a minor one)?	Yes – Destroy Car Seat	No – Continue
6. Are there any cracks, bends, or breaks in the plastic shell?	Yes – Destroy Car Seat	No – Continue
7. Is the metal frame rusted, bent or broken?	Yes – Destroy Car Seat	No – Continue
8. Do you have a copy of the manufacturer's instructions?	Yes – Include printed instructions with item, then Continue	No - print manual from manufacturer's website
9. Does the seat have all of its parts including harness straps, harness clip, seat cover, tether, padding, shield and bolts?	Yes – Continue	No – Destroy Car Seat or Obtain replacements, then Continue
10. Are the harness straps worn or frayed and/or have the straps ever been washed in a washing machine?	Yes – Destroy Car Seat or Obtain replacements, then Continue	No – Continue
11. Have the car seat and/or straps been cleaned only per the manufacturer's instructions?	Yes – Continue	No – Destroy Car Seat or Contact Manufacturer to verify integrity has not been compromised, then Continue
12. Does the buckle or any other metal part show signs of rust?	Yes – Destroy Car Seat or Obtain replacements, then Continue	No – Continue
13. Is the car seat clean with no visible stains, holes, or tears?	Yes – Continue	No – Clean and repair or Destroy Car Seat
14. When buckled, does the mechanism lock securely and remain locked when in use?	Yes – Complete bottom portion to consign car seat	No – Destroy Car Seat or Obtain replacements then complete bottom portion to consign car seat

In order to sell a car seat please read, verify and sign the following:

I am the original owner of the car seat that I am selling through Just Between Friends Children's Consignment Sales Event and verify that it has never been in an automobile accident, has not been broken in anyway, has all of its parts, contains the identification label and is 1 year or more from expiration. I verify that the car seat has not been recalled to the best of my knowledge and if so, has been corrected to meet Motor Vehicle Safety standards. I verify that the car seat has all its harness straps, harness clip, seat cover, padding, shield and bolts and that the locking mechanism locks securely.

Date

Signature

Print Consignor Name

Consignor Number

Consignor Crib Checklist - One for each crib consigned

1	Was the crib manufactured on or after June 28, 2011?	<input type="checkbox"/> Yes – continue to 4	<input type="checkbox"/> No – continue
2	Was the crib manufactured between July 23, 2010 and June 28, 2011?	<input type="checkbox"/> Yes – continue to 2b	<input type="checkbox"/> No – continue to 3
2b	Do you have a certificate of compliance from the crib manufacturer or original crib retailer?	<input type="checkbox"/> Yes – attach a copy to this form and continue to 4	<input type="checkbox"/> No – obtain a certificate of compliance or DESTROY
3	Was the crib manufactured before July 23, 2010?	<input type="checkbox"/> Yes – DESTROY	<input type="checkbox"/> No – answer questions 1-2b and continue
4	Is the date of manufacture on the crib?	<input type="checkbox"/> Yes – continue	<input type="checkbox"/> No – DESTROY
5	Has the crib been recalled?	<input type="checkbox"/> Yes – continue to 5b	<input type="checkbox"/> No – continue to 6
5b	Has the crib had the manufacturer approved recall fix?	<input type="checkbox"/> Yes - continue	<input type="checkbox"/> No – acquire the fix or DESTROY
6	Do you have a copy of the manufacturer's instructions?	<input type="checkbox"/> Yes – continue	<input type="checkbox"/> No – obtain instructions
7	Does the crib have all of its original parts?	<input type="checkbox"/> Yes – continue	<input type="checkbox"/> No – obtain all parts or DESTROY
8	Do you know the history of the crib?	<input type="checkbox"/> Yes – USE CRIB!!	<input type="checkbox"/> No – DESTROY

Consignor Name _____ Cons. # _____

Date on Crib _____

Model # _____ Serial # _____

In order to sell a crib, please read and sign the following:

____ I am the owner of the crib that I am selling through Just Between Friends Children's Consignment Sales Event and verify that the crib was not manufactured prior to July 23, 2010. I have attached an original copy of the manufacturer or retailer's certificate of compliance if the crib was manufactured between July 23, 2010 and June 28, 2011. I verify that the original manufacture date is on the crib.

Signature _____

Date _____